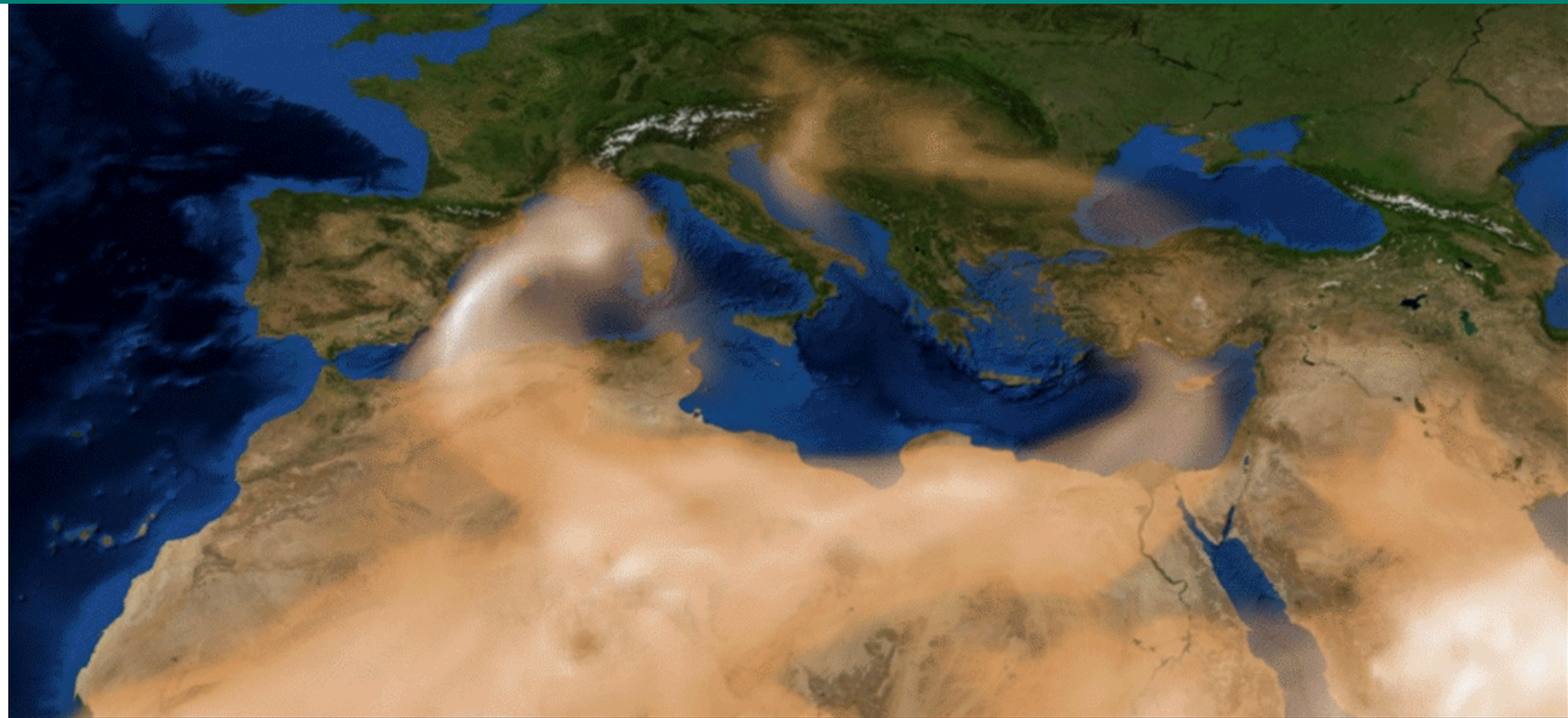


# Natural sources contribution

**Jaume Targa**

# Natural sources contribution



# KEY QUESTIONS!

- Should we report corrected data?
- Is it sufficient to quantify correction in G?

# KEY QUESTIONS!

- Should we report corrected data?
  - **MUST REPORT CORRECTION VALUES**
  - **NO CORRECTED**
- Is it sufficient to quantify correction in G?

# KEY QUESTIONS!

- Should we report corrected data?
  - Is it sufficient to quantify correction in G?
    - NO
    - DG ENV REQUIRES DATA TO BE PROVIDED
- UNDER D1B+E1B



# Proposal & discussion

- Types of contribution
- Reporting
- Discussion

# Type of contribution

- Contribution can be calculated from
  - Direct measurements
  - Modelling
  - A combination of both
- Meta-data D/D1b and data E1a/E1b will depend on how it is calculated

# Type of contribution

- However, which ever type...
- We are expecting countries to report the CORRECTION  
VALUES not the ~~CORRECTED~~



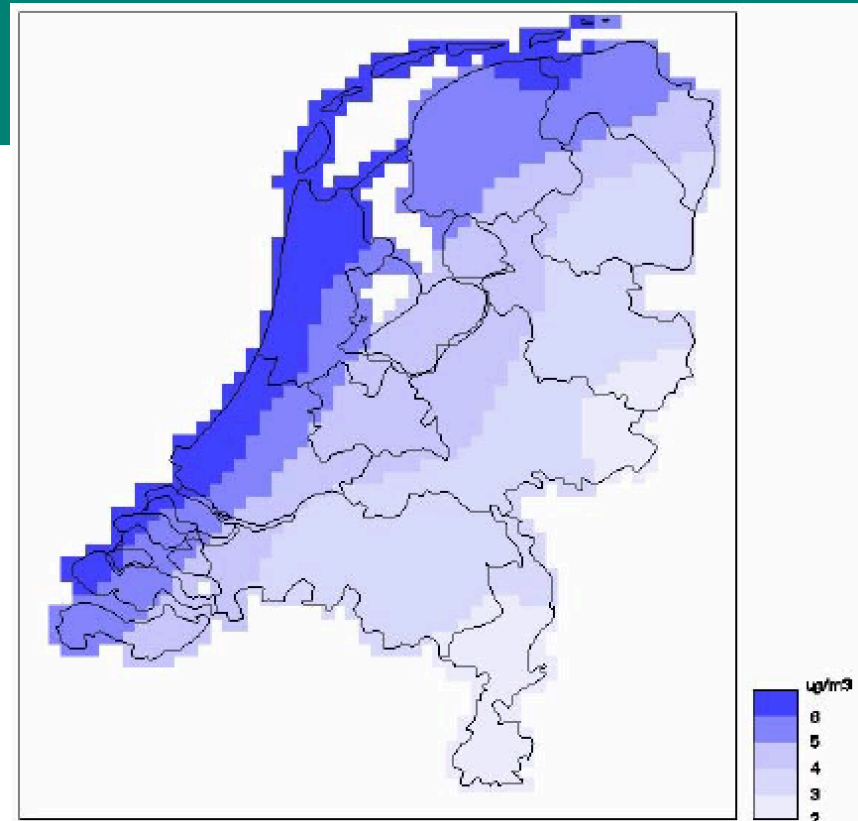
# Direct measurements

- **SIMPLE example:**
  - Direct Na & Cl measurements in PM10
  - Report SPOs in D
  - Report data under E1a



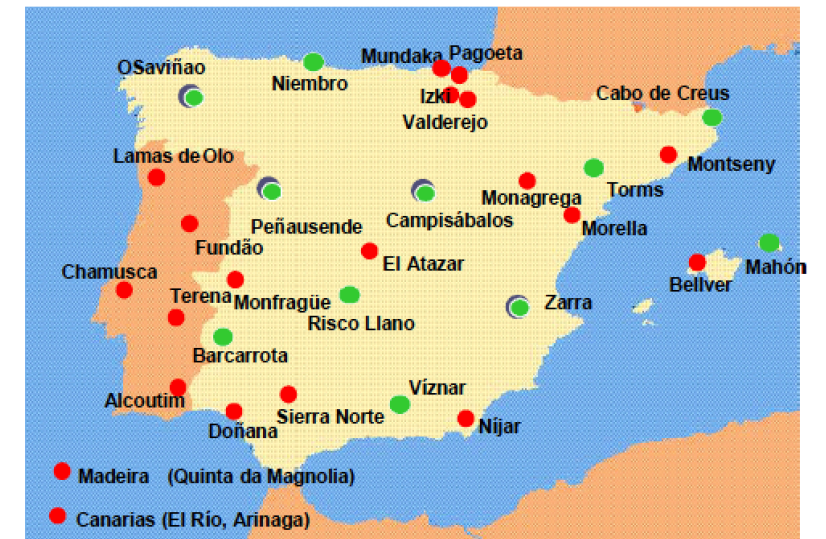
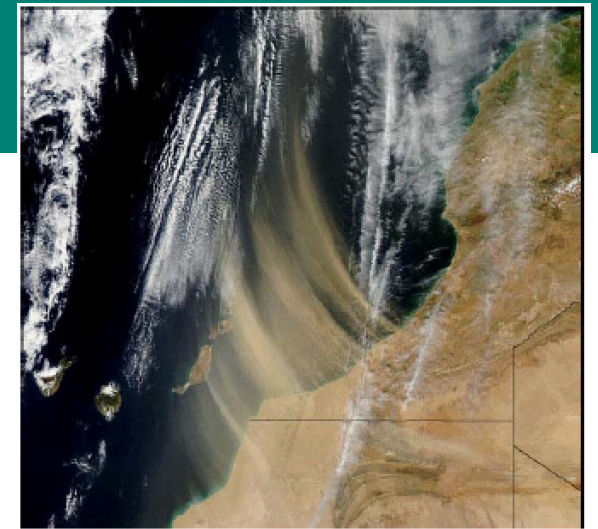
# Modelling

- **“SIMPLE” modelling example:**
  - Modelled NaCl
  - Report Model in D1b
  - Report data under E1b



# Direct measurements + modelling

- **Complex contribution calculation:**
  - Identification of episode days
  - Quantification of daily contribution at background stations
  - Quantification at each SPO level



# Direct measurements + modelling

- **If contribution looks like a timeseries:**

- Data to be reported as timeseries

- **D1b**

- **E1b using swe:array option**

- **DAILY PM10 CONTRIBUTION**

▼<swe:values>

2017-01-01T00:00:00,2017-01-01T24:00:00,3,1,37.4@@2017-01-02T00:00:00,2017-01-02T24:00:00,3,1,34.3@@  
04T00:00:00,2017-01-04T24:00:00,3,1,60.5@@2017-01-05T00:00:00,2017-01-05T24:00:00,3,1,34.5@@2017-0  
07T00:00:00,2017-01-07T24:00:00,3,1,53.0@@2017-01-08T00:00:00,2017-01-08T24:00:00,3,1,51.3@@2017-0  
10T00:00:00,2017-01-10T24:00:00,3,1,26.8@@2017-01-11T00:00:00,2017-01-11T24:00:00,3,1,42.3@@2017-0  
13T00:00:00,2017-01-13T24:00:00,3,1,23.5@@2017-01-14T00:00:00,2017-01-14T24:00:00,3,1,24.6@@2017-0  
16T00:00:00,2017-01-16T24:00:00,3,1,41.9@@2017-01-17T00:00:00,2017-01-17T24:00:00,3,1,54.1@@2017-0  
19T00:00:00,2017-01-19T24:00:00,3,1,31.6@@2017-01-20T00:00:00,2017-01-20T24:00:00,3,1,64.1@@2017-0  
22T00:00:00,2017-01-22T24:00:00,3,1,31.9@@2017-01-23T00:00:00,2017-01-23T24:00:00,3,1,33.6@@2017-0  
25T00:00:00,2017-01-25T24:00:00,3,1,49.9@@2017-01-26T00:00:00,2017-01-26T24:00:00,3,1,24.5@@2017-0  
28T00:00:00,2017-01-28T24:00:00,3,1,31.5@@2017-01-29T00:00:00,2017-01-29T24:00:00,3,1,23.6@@2017-0  
31T00:00:00,2017-01-31T24:00:00,3,1,29.6@@2017-02-01T00:00:00,2017-02-01T24:00:00,3,1,26.1@@2017-0  
02T00:00:00,2017-02-03T24:00:00,3,1,46.2@@2017-02-04T00:00:00,2017-02-04T24:00:00,3,1,32.5@@2017-0  
06T00:00:00,2017-02-06T24:00:00,3,1,43.5@@2017-02-07T00:00:00,2017-02-07T24:00:00,3,1,27.4@@2017-0  
09T00:00:00,2017-02-09T24:00:00,3,1,38.4@@2017-02-10T00:00:00,2017-02-10T24:00:00,3,1,23.1@@2017-0  
12T00:00:00,2017-02-12T24:00:00,3,1,23.9@@2017-02-13T00:00:00,2017-02-13T24:00:00,3,1,27.0@@2017-0  
15T00:00:00,2017-02-15T24:00:00,3,1,36.2@@2017-02-16T00:00:00,2017-02-16T24:00:00,3,1,40.7@@2017-0  
18T00:00:00,2017-02-18T24:00:00,3,1,23.8@@2017-02-19T00:00:00,2017-02-19T24:00:00,3,1,23.0@@2017-0  
21T00:00:00,2017-02-21T24:00:00,3,1,32.1@@2017-02-22T00:00:00,2017-02-22T24:00:00,3,1,40.6@@2017-0  
24T00:00:00,2017-02-24T24:00:00,3,1,16.9@@2017-02-25T00:00:00,2017-02-25T24:00:00,3,1,40.0@@2017-0  
27T00:00:00,2017-02-27T24:00:00,3,1,19.4@@2017-02-28T00:00:00,2017-02-28T24:00:00,3,1,23.5@@2017-0  
02T00:00:00,2017-03-02T24:00:00,3,1,30.4@@2017-03-03T00:00:00,2017-03-03T24:00:00,3,1,21.3@@2017-0  
05T00:00:00,2017-03-05T24:00:00,3,1,19.8@@2017-03-06T00:00:00,2017-03-06T24:00:00,3,1,34.3@@2017-0  
08T00:00:00,2017-03-08T24:00:00,3,1,44.1@@2017-03-09T00:00:00,2017-03-09T24:00:00,3,1,51.3@@2017-0  
11T00:00:00,2017-03-11T24:00:00,3,1,20.5@@2017-03-12T00:00:00,2017-03-12T24:00:00,3,1,20.6@@2017-0  
14T00:00:00,2017-03-14T24:00:00,3,1,25.5@@2017-03-15T00:00:00,2017-03-15T24:00:00,3,1,34.4@@2017-0  
17T00:00:00,2017-03-17T24:00:00,3,1,31.1@@2017-03-18T00:00:00,2017-03-18T24:00:00,3,1,31.1@@2017-0  
20T00:00:00,2017-03-20T24:00:00,3,1,24.3@@2017-03-21T00:00:00,2017-03-21T24:00:00,3,1,21.9@@2017-0  
23T00:00:00,2017-03-23T24:00:00,3,1,17.8@@2017-03-24T00:00:00,2017-03-24T24:00:00,3,1,19.8@@2017-0  
26T00:00:00,2017-03-26T24:00:00,3,1,15.9@@2017-03-27T00:00:00,2017-03-27T24:00:00,3,1,30.0@@2017-0  
29T00:00:00,2017-03-29T24:00:00,3,1,37.8@@2017-03-30T00:00:00,2017-03-30T24:00:00,3,1,31.4@@2017-0

<http://cdr.eionet.europa.eu/pt/eu/aqd/e1b/envw6nPT-E1B-2017.xml>





# *Direct measurements + modelling*

- **If contribution looks like...**
- **A) Turn them into timeseries (provide daily PM<sub>10</sub> Correction)**
- **B) Model data of annual/daily PM<sub>10</sub> corrections**

# *Direct measurements + modelling* **ENSURE**

- E1b is reported using aggregation code list
- No hourly data!!!
- Minimum reporting data is DAILY
- CORRECTION VALUES



# Pollutant

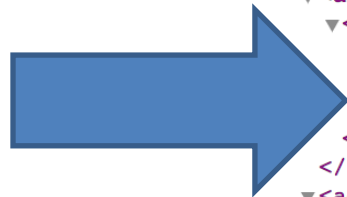
- Internal discussions if we should create specific pollutant code list for correction
- HOWEVER, CURRENT GUIDANCE ARE:
- Report data as /1, /5 or /6001

# *Discussion – identify in D1b & E1b*

- Should we identify in D1b & E1b that the assessment method and data are for CORRECTING? - NO
- Is it sufficient to identify these at Assessment Regime & Attainment level?? – YES, FOR NOW!

# Discussion – id

## • ASSESSMENT REGIME (C)



```
<gml:featureMember>
  <aqd:AQD_AssessmentRegime gml:id="ARE-PT3001_00005_H_LV_daysAbove_2017">
    <aqd:inspireId>
      <base:Identifier>
        <base:localId>ARE-PT3001_00005_H_LV_daysAbove_2017</base:localId>
        <base:namespace>PT.APA.AQ</base:namespace>
      </base:Identifier>
    </aqd:inspireId>
    <aqd:pollutant xlink:href="http://dd.eionet.europa.eu/vocabulary/aq/pollutant/5"/>
    <aqd:assessmentThreshold>
      <aqd:AssessmentThreshold>
        <aqd:environmentalObjective>
          <aqd:EnvironmentalObjective>
            <aqd:objectiveType xlink:href="http://dd.eionet.europa.eu/vocabulary/aq/objectivetype/LV"/>
            <aqd:reportingMetric xlink:href="http://dd.eionet.europa.eu/vocabulary/aq/reportingmetric/daysAbove"/>
            <aqd:protectionTarget xlink:href="http://dd.eionet.europa.eu/vocabulary/aq/protectiontarget/H"/>
          </aqd:EnvironmentalObjective>
        </aqd:environmentalObjective>
        <aqd:exceedanceAttainment xlink:href="http://dd.eionet.europa.eu/vocabulary/aq/assessmentthresholdexceedance/aboveUAT"/>
      </aqd:AssessmentThreshold>
    </aqd:assessmentThreshold>
    <aqd:classificationDate>
      <gml:TimeInstant gml:id="ARE-PT3001_00005_H_LV_daysAbove_2017.Date">
        <gml:timePosition>2017-12-31</gml:timePosition>
      </gml:TimeInstant>
    </aqd:classificationDate>
    <aqd:classificationReport>http://qualar.apambiente.pt</aqd:classificationReport>
  </aqd:AssessmentThreshold>
</aqd:assessmentThreshold>
  <aqd:assessmentMethods>
    <aqd:AssessmentMethods>
      <aqd:assessmentType xlink:href="http://dd.eionet.europa.eu/vocabulary/aq/assessmenttype/model"/>
      <aqd:assessmentTypeDescription>Description of the modeling for adjusting</aqd:assessmentTypeDescription>
      <aqd:modelAssessmentMetadata xlink:href="PT.APA.AQ/MOD-PT00081"/>
    </aqd:AssessmentMethods>
  </aqd:assessmentMethods>
  <aqd:assessmentMethods>
    <aqd:AssessmentMethods>
      <aqd:assessmentType xlink:href="http://dd.eionet.europa.eu/vocabulary/aq/assessmenttype/fixed"/>
    </aqd:AssessmentMethods>
  </aqd:assessmentMethods>
</aqd:AQD_AssessmentRegime>
</gml:featureMember>
```

```
<aqd:assessmentMethods>
  <aqd:AssessmentMethods>
    <aqd:assessmentType xlink:href="http://dd.eionet.europa.eu/vocabulary/aq/assessmenttype/model"/>
    <aqd:assessmentTypeDescription>Description of the modeling for adjusting</aqd:assessmentTypeDescription>
    <aqd:modelAssessmentMetadata xlink:href="PT.APA.AQ/MOD-PT00081"/>
  </aqd:AssessmentMethods>
```

```
<aqd:zone xlink:href="PT.APA.AQ/ZON-PT3001"/>
</aqd:AQD_AssessmentRegime>
</gml:featureMember>
```

# Discussion – identify in D1b & E1b

- G – link to model used for adjusting PM10



```
<aqd:exceedanceDescriptionAdjustment>
  <aqd:ExceedanceDescription>
    <aqd:exceedance>false</aqd:exceedance>
    <aqd:numberExceedances>25</aqd:numberExceedances>
    <aqd:deductionAssessmentMethod>
      <aqd:AdjustmentMethod>
        <aqd:assessmentMethod>
          <aqd:AssessmentMethods>
            <aqd:assessmentType xlink:href="http://dd.eionet.europa.eu/vocabulary/aq/assessmenttype/model"/>
            <aqd:assessmentTypeDescription>model</aqd:assessmentTypeDescription>
            <aqd:modelAssessmentMetadata xlink:href="PT.APA.AQ/MOD-PT00081"/>
          </aqd:AssessmentMethods>
        </aqd:assessmentMethod>
        <aqd:adjustmentType xlink:href="http://dd.eionet.europa.eu/vocabulary/aq/adjustmenttype/nsCorrection"/>
        <aqd:adjustmentSource xlink:href="http://dd.eionet.europa.eu/vocabulary/aq/adjustmentsourcetype/G2"/>
      </aqd:AdjustmentMethod>
    </aqd:deductionAssessmentMethod>
    <aqd:exceedanceArea>
      <aqd:ExceedanceArea>
        <aqd:areaClassification xlink:href="http://dd.eionet.europa.eu/vocabulary/aq/areaclassification/urban"/>
        <aqd:stationUsed xlink:href="PT.APA.AQ/SPO-PT03100_00005_100"/>
      </aqd:ExceedanceArea>
    </aqd:exceedanceArea>
  </aqd:ExceedanceDescription>
</aqd:exceedanceDescriptionAdjustment>
```

# Any Questions?



**European Topic Centre**  
*on Air Pollution and  
Climate Change Mitigation*



## EEA-ETC/ACM contact:

**Jaume Targa (4sfera Innova)**

**Principal consultant**

## **AQD IPR e-Reporting Helpdesk:**

**[aqipr.helpdesk@eionet.europa.eu](mailto:aqipr.helpdesk@eionet.europa.eu)**

**m. +34 679 38 01 01**

**e. [jaume.targa@4sfera.com](mailto:jaume.targa@4sfera.com)**

**skype [jaume.targa.4sfera](https://www.skype.com/people/jaume.targa.4sfera)**

**twitter [@4sfera](https://twitter.com/4sfera)**

**web [www.4sfera.com](http://www.4sfera.com)**

**You can follow us on twitter [@4sfera](https://twitter.com/4sfera)**

